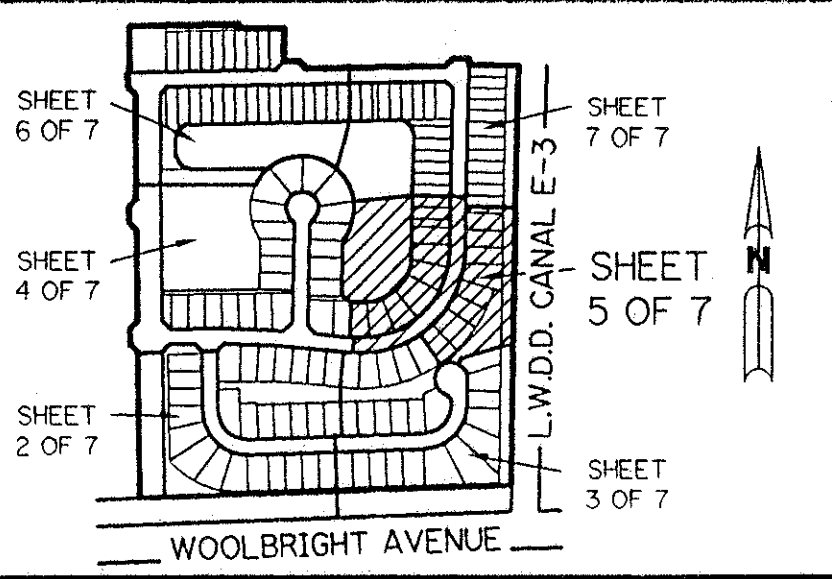


# MAJESTIC ISLES - PLAT ONE

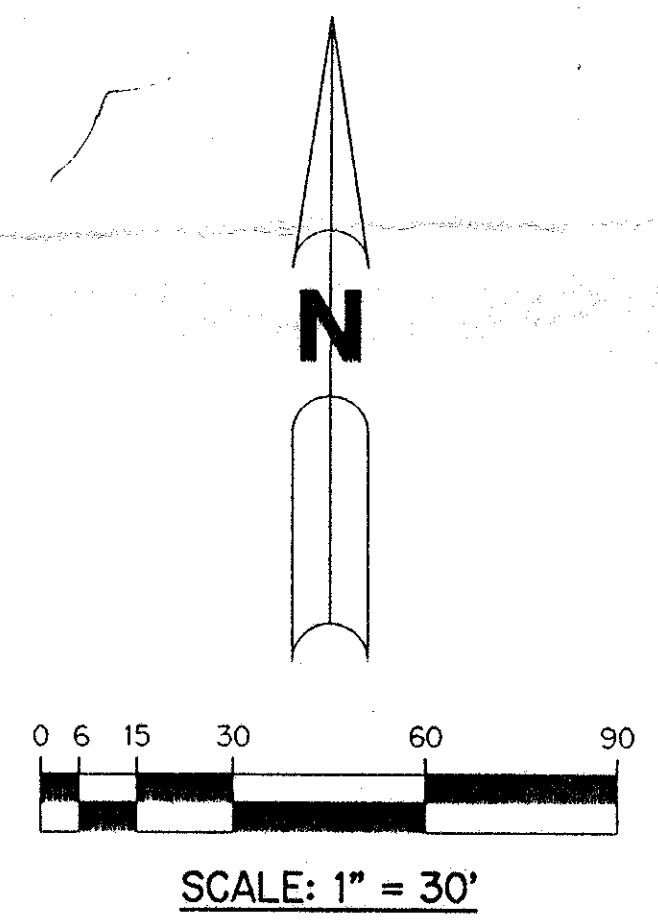
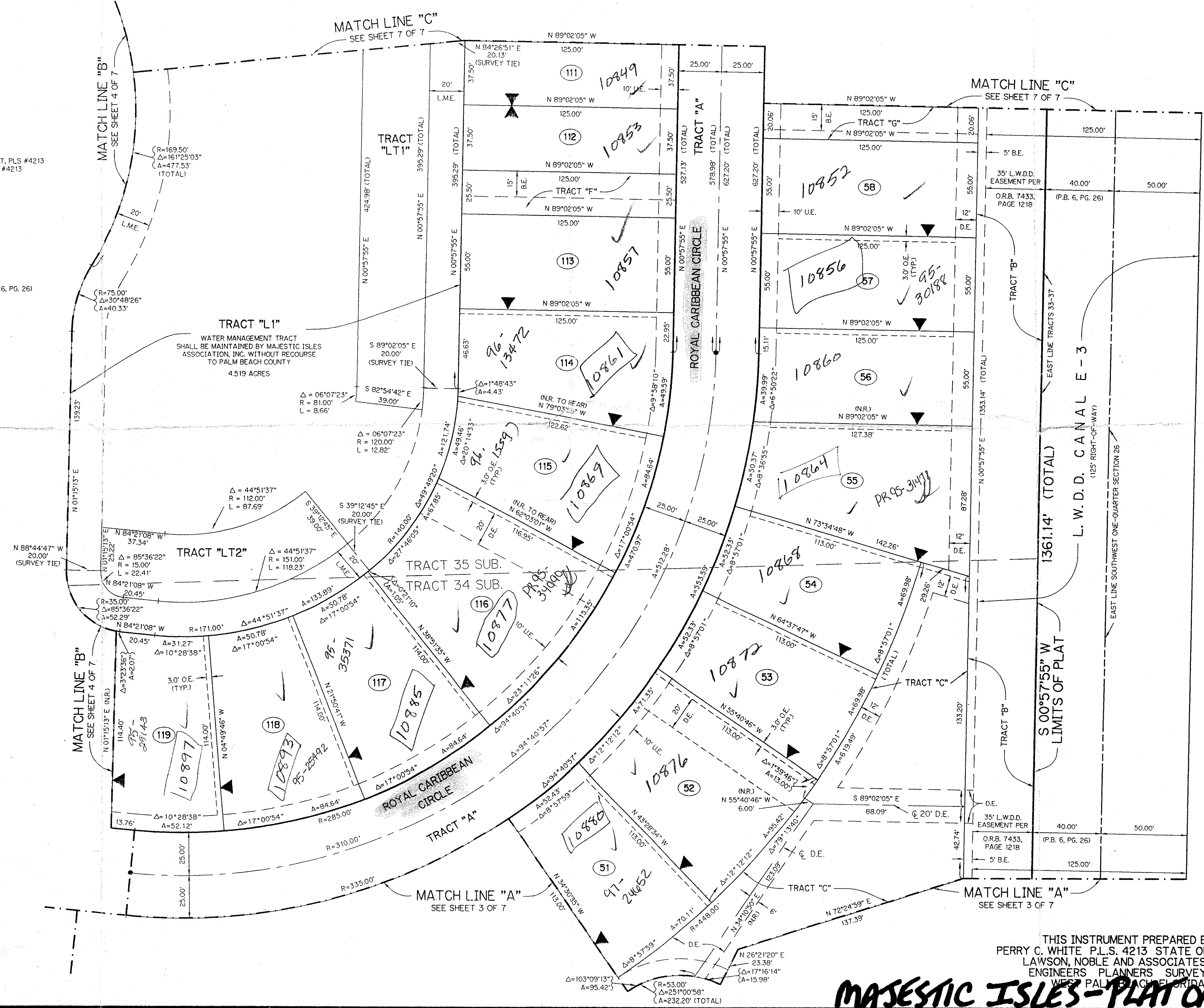
BEING A REPLAT OF A PORTION OF TRACTS 33, 34, 35, 36, 37, 52, 53, AND 54 AND ASSOCIATED ABANDONED RIGHT-OF-WAY ACCORDING TO THE PLAT OF THE SUBDIVISION OF SECTION 26-45S-42E, AS RECORDED IN PLAT BOOK 6, PAGE 26, PUBLIC RECORDS OF PALM BEACH COUNTY, FLORIDA, LYING IN SECTION 26, TOWNSHIP 45 SOUTH, RANGE 42 EAST.

*PET. 88-139B  
NO SCHOOLS D  
RESTRICTIVE  
COVENANT  
5/3/91K*



KEY MAP  
N.T.S.

- LEGEND:**
- - PERMANENT REFERENCE MONUMENT, PLS #4213
  - - PERMANENT CONTROL POINT, PLS #4213
  - △ - DELTA ANGLE
  - A - ARC LENGTH
  - B.E. - BUFFER EASEMENT
  - D.E. - DRAINAGE EASEMENT
  - L.A.E. - LIMITED ACCESS EASEMENT
  - L.M.E. - LAKE MAINTENANCE EASEMENT
  - L.W.D.D. - LAKE WORTH DRAINAGE DISTRICT
  - N.R. - NOT RADIAL
  - N.T.S. - NOT TO SCALE
  - O.E. - OVERHANG EASEMENT
  - O.R.B. - OFFICIAL RECORD BOOK
  - P.B. - PLAT BOOK
  - PGS. - PAGES
  - P.L.S. - PROFESSIONAL LAND SURVEYOR
  - SUBJ. - SUBDIVISION OF SECTION 26 (P.B. 6, PG. 26)
  - R - RADIUS
  - TYP. - TYPICAL
  - U.E. - UTILITY EASEMENT
  - ▲ - INDICATES ZERO LOT LINE
  - ⊕ - INDICATES COMMON LOT LINE



*74/90  
0627-001*

THIS INSTRUMENT PREPARED BY  
PERRY C. WHITE P.L.S. 4213 STATE OF FLORIDA  
LAWSON, NOBLE AND ASSOCIATES, INC.  
ENGINEERS PLANNERS SURVEYORS  
WEST PALM BEACH, FLORIDA

## MAJESTIC ISLES - PLAT ONE

TAZ-448

SUBDIVISION - Majestic Isles Plat  
BOOK 74 PAGE 90  
FLOOD ZONE B FLOOD MAP # 1908  
QUAD # 35 ZONING RS  
SE 88-139 ZIP CODE 33437  
PUD NAME Same  
10/14/94